

Lakes Of Oklahoma

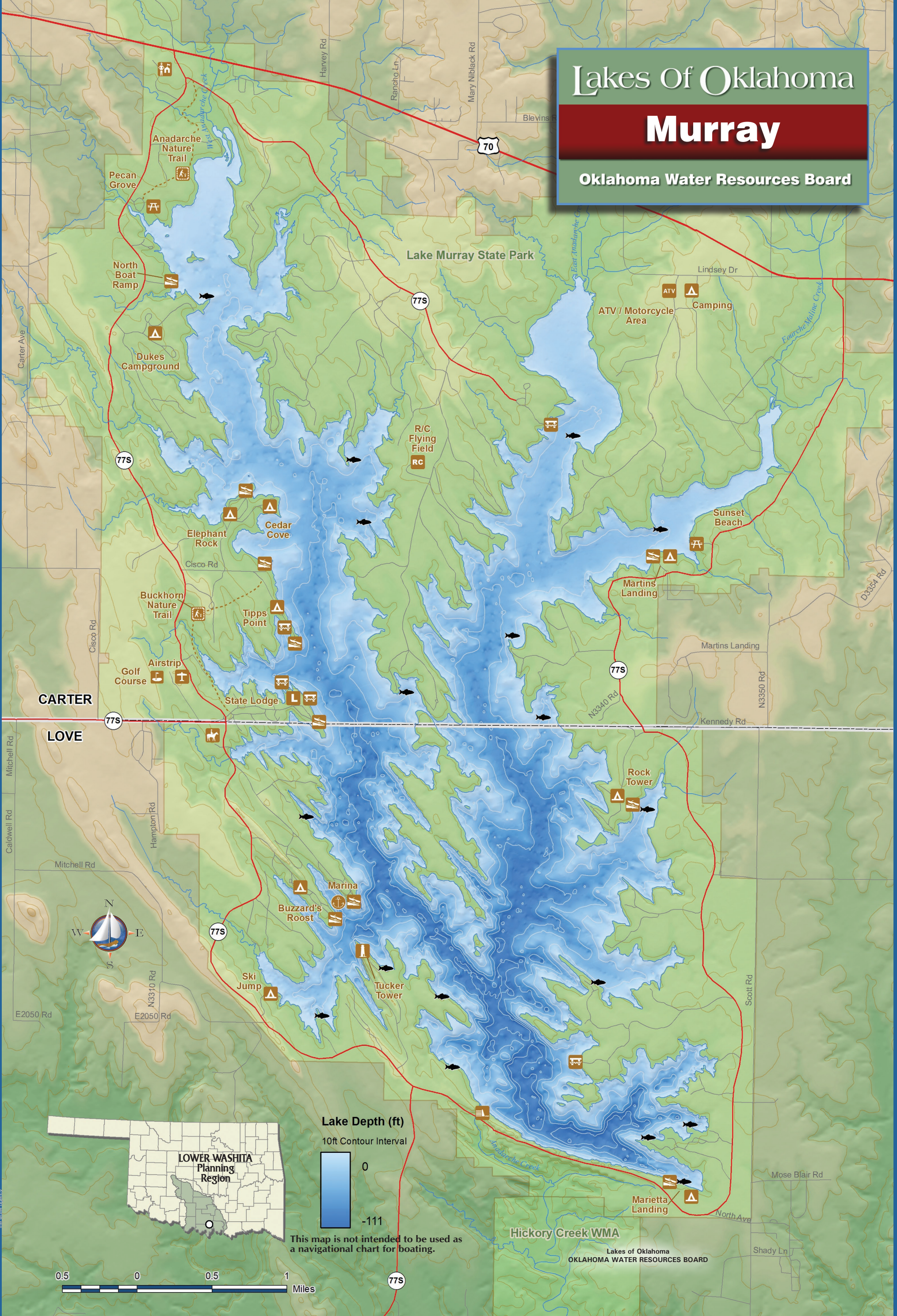
Murray

Oklahoma Water Resources Board



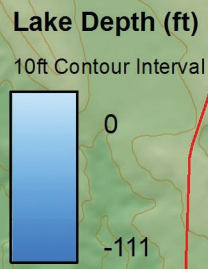
1937

Murray



Area: 5,876 acres
Capacity: 161,642 acre-feet
Shoreline: 95 miles

STATE OF OKLAHOMA
Purpose: R
Normal Elevation: 750.0 feet



This map is not intended to be used as a navigational chart for boating.

